

PROJECT DATA

Client		
Gazelle Restoration Authority	Sir Henry ToRobert, KBE Chairman	
Contact Details	Gazelle Restoration Authority P.O. Box 1175 Port Moresby Phone (675) 3211888 Fax: (675) 3211986	
	OR	
	Mr John Painap OBE Project Manager Gazelle Restoration Authority KOKOPO East New Britain Papua New Guinea Phone: (675) 982 8768 Fax: (675) 982 8767	
Consultancy Services		
SMEC International in association with: Beca Gure (PNG) Pty Ltd, Asia Pacific Surveys Pty Ltd and M+E Partnership Pty Ltd		
Period of Consultancy	January 1997 – May 1998	
Person Months	28 International 30 Local	
Project Data		
Pre-eruption Population	17,000	
Current Population	3,000	
Planned Population	8,000	
Direct Costs of Damage to Rabaul Town	Infrastructure	~\$100 million
	Insured Losses	~\$60 million
	Uninsured Losses	~\$120 million
	<i>Total</i>	<i>~\$280 million</i>
Restoration Costs for Infrastructure (less buildings)	Stage 1	~\$17 million
	Stage 2	~\$5 million
	Stage 3	~\$18 million
Value of Designed Works	~\$15 million	

ORGANISATION AND STAFFING



Photo 6 The Project Team

L to R: Robert Goldsmith (Geotechnical Engineer) Professor Russell Blong (Risk Advisor), Tony Lucy (Project Director), Geoffrey Flynn (Structural Engineer) Elsa Carlson (Office Manager), Lawrie Carlson (Project Manager) John Ecroyd (Water/Wastewater Engineer) Lot Zauya (Road Engineer)

Missing: Sandra Finster (Urban Planner) Neil Whiting (Power and Telecommunications Specialist) Graham Levy (Drainage Engineer) Andrew Wassen (Surveyor) Paul Wells Green (Ports and Harbours Specialist) Kevin Fehon (Traffic Specialist)

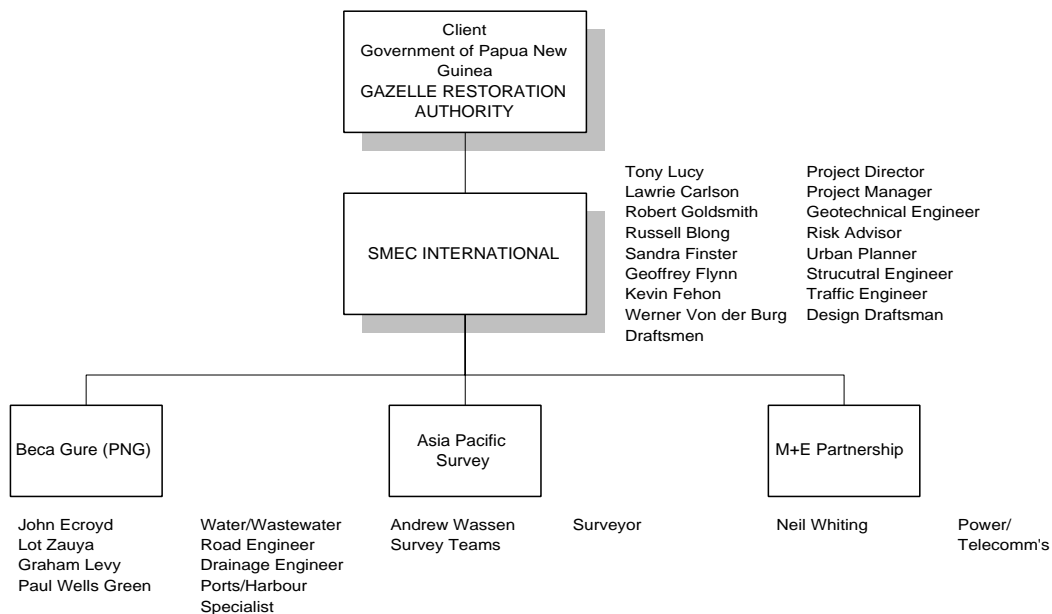


Figure 6 Consultant's Organization Chart

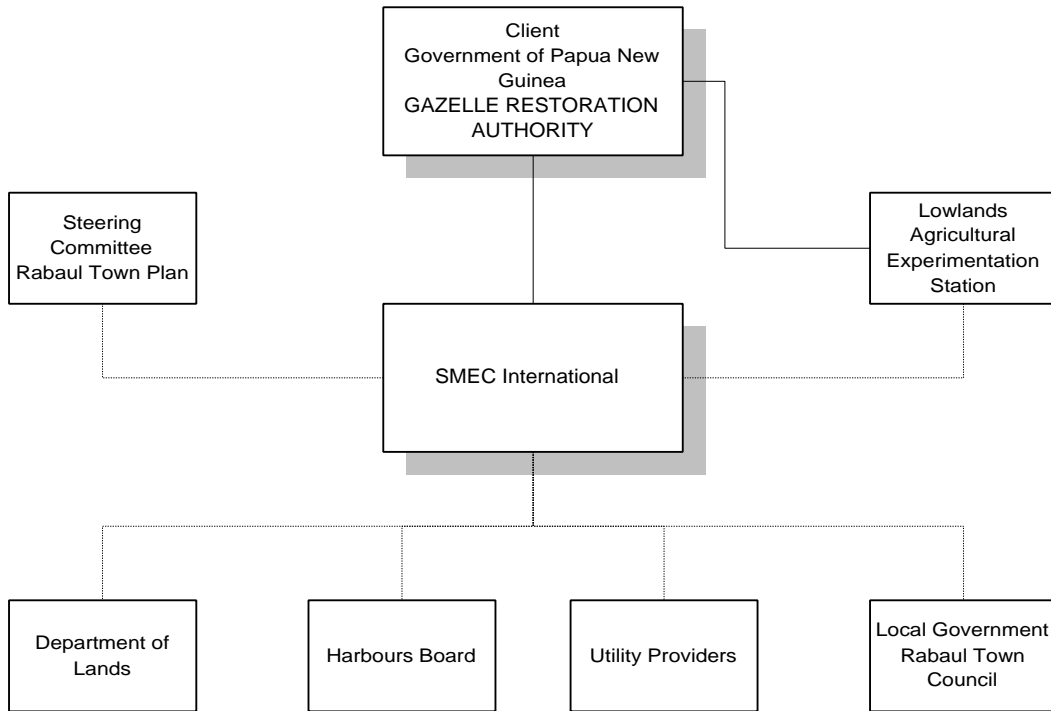


Figure 7 Project Organisation Chart